

Autodesk® AutoCAD Plant 3D® Software™ - Fundamentals

Brief Synopsis of Class Contents:

This live, online class covers the basics of Autodesk® AutoCAD Plant 3D®, from P&ID to 3D design and documentation, as well as an introduction to Navisworks for model checking. Students will be introduced to the concepts of P&ID, structural and pipe modeling, isometrics and ortho documentation, and the administration of Plant Projects..

Learning Objectives:

- Become familiar with the concepts and benefits of project based Plant design.
- Understand the fundamental concepts and features of Autodesk® AutoCAD Plant 3D®.
- Use the schematic tools of P&ID to start designing a Plant project. Use the 3D tools to create designs that meet or exceed the requirements of the plant being designed.
- Use the automated tools for project documentation in orthographics and isometrics.
- Develop an initial level of comfort and confidence with Autodesk® AutoCAD Plant 3D® through hands-on experience.

Courseware:

Ascent Official Training Courseware: Introduction to Plant Design 2017

Number of Days:

5 Half Day Sessions

Continuing Education Hours:

18 hours

Who Should Attend:

All new users of AutoCAD Plant 3D

Prerequisites:

AutoCAD fundamentals knowledge and experience.

System and Software Requirements:

www.livelablearning.com/FAQs/SystemRequirements

FAQs and Cancellation Policy:

www.livelablearning.com/FAQs

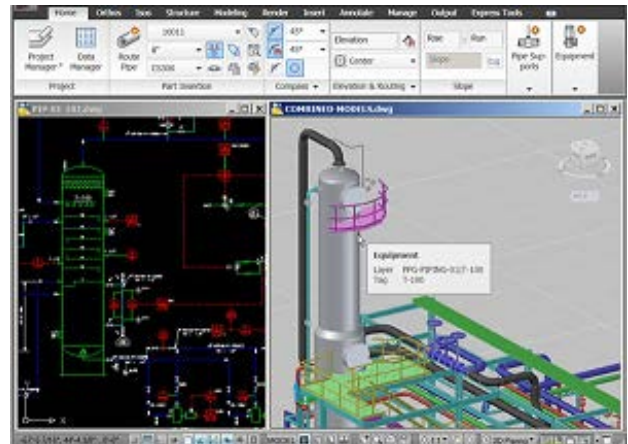
Class Outline and Topics:

Chapter or Main Topic

- Working in a project
- User Interface
- Managing layers and colors

Chapter or Main Topic

- Creating new drawings in a project
- Equipment and Nozzles
- Pipe lines and Inline components
- Instruments and lines
- Tagging and Annotations
- Data management and reports
- Custom symbols
- Off page connections
- P&ID Administration



AutoCAD Plant 3D – Imperial

- Creating and using project folders and drawings
- Steel modeling and editing
- Equipment modeling and editing
- Routing pipe, fittings, connections and supports
- Accessing P&ID data in Plant 3D
- Creating and editing Orthographic drawings
- Creating and editing Isometric drawings

Project Administration

- Project setup
- Multi-user projects
- New objects and properties
- Customizing the Data Manager, Reports and DWG templates
- Overview of Specs and Catalogs