

Autodesk® Revit Architecture - Fundamentals

Brief Synopsis of Class Contents:

This live, online class covers the basics of Autodesk Revit Architecture, from schematic design through construction documents. Students will be introduced to the concepts of Building Information Modeling and the tools for parametric design and documentation

Learning Objectives:

- Become familiar with the concepts and benefits of Building Information Modeling.
- Understand the fundamental concepts and features of Autodesk Revit Architecture.
- Use the Parametric 3D design tools to start designing projects.
- Use the automated tools for project documentation.
- Develop an initial level of comfort and confidence with Autodesk Revit Architecture through hands-on experience.
- Know how to use Revit Architecture in a typical workflow.

Courseware:

Ascent Official Training Courseware
-Revit Architecture Essentials

Number of Days:

5 Half Day Sessions

Continuing Education Hours:

18 hours

Who Should Attend:

Architects, Engineers and Master Planners

Prerequisites:

Basic computer knowledge and experience

System and Software Requirements:

<http://www.asti.com/LiveLab-Learning-amp-Training/LiveLab-System-Requirements>

FAQs and Cancellation Policy:

<http://www.asti.com/LiveLab-Learning-amp-Training/LiveLab-FAQS>

Class Outline and Topics:

Introduction to Building Information Modeling (BIM) and Revit User Interface & Project Setup

- Recent Files Screen
- Creating a new Project
- User Interface

Project Browser / Project Organization

- Floor Plans, Ceiling Plans, Elevations, Sections, Details, 3D Views
- View Organization
- Legends, Schedules
- Sheets, Families, Groups, Revit Links
- View Navigation

Elements

- Datum / Host Elements / Hosted Components / Views / Annotations
- Levels / Grids / Reference Planes

Basic Architectural Modeling

- Add Walls, doors, Windows, Floors, Roofs
- Properties Palette / Options Bar
- Draw Options
- Element Selection / Selection Filters
- Modify Elements: Edit Tools / Modify Tools / Geometry Tools
- Load Content / Family Libraries
- Parametric Constraints (Level, Align, EQ, Dimensional Lock)

View Creation and Properties

- Creating Plans, Elevations, Sections
- Callouts, Details, Drafting

Views

- Duplicate Views
- View Properties / View Control Bar / Visibility Graphics
- 3D Orthographic Views / Perspective Views
- Right Click Menu Options

Basic Structural Modeling

- Grids
- Columns
- Floor Slabs / Slab Edges
- Foundations

Develop a Project

- Interior Layout
- Rooms, Room Schedule, Door Schedule
- Furniture, Fixtures, Equipment
- Custom Wall types, Curtain Walls, Stacked Walls

More Views

- Color Fill Plans / Shadows
- Perspective Camera View
- 3D View Oriented to Other View

Ceilings

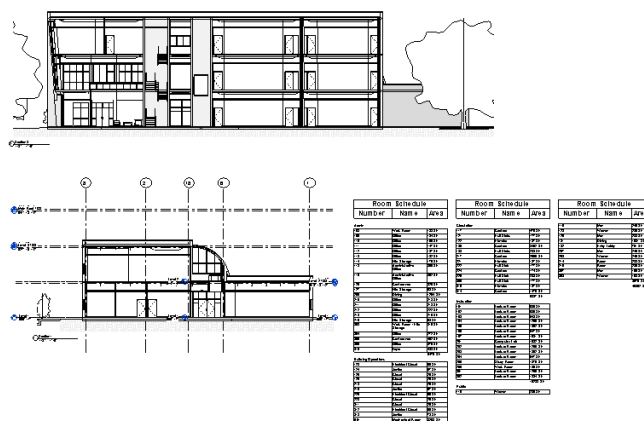
- Ceiling View Properties
- Automatic / Sketch Based Ceilings
- Continuous Ceilings / Cloud Ceilings / Soffits
- Light Fixtures / Ceiling Elements

Detailing

- Annotating Detail Views
- Importing CAD Details
- Detail Lines / Detail Components
- Edit Cut Profile
- Lock 3D View
- Detail Groups & Group Editor

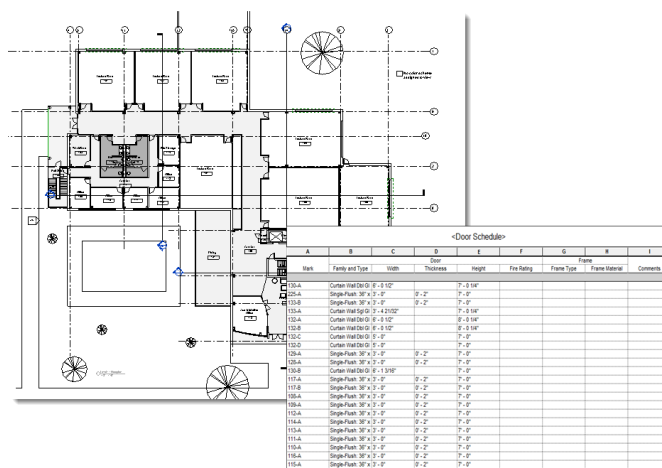
Vertical Circulation & Penetrations

- Stairs, Ramps, Elevators
- Railings / Railing Extensions
- Multi-Level vs. Single Story
- Sketch Stairs / Component Stairs
- Shaft Opening



Annotation and Sheet Composition

- Model Views, Schedules, Legends, Drafting Views
- Tags, Keynotes, Dimensions, Symbols, Detail Components
- Creating Sheets, Adding Views, Activating/Deactivating Views
- Issues and Revisions



Output

- Printing / PDF / Settings
- Export to DWFX / DWG / DGN / Settings
- Export to IFC, gbXML
- Export Images