

## Autodesk® Revit® Structure - Advanced

### Brief Synopsis of Class Contents:

This live, online class builds on the concepts and skills introduced in the Autodesk® Revit® Structure Fundamentals and Intermediate Level Courses. The student will learn the importance and value of setting up a project template to consistently control standards and pre-populate projects with needed content. Also, title blocks and how to customize will be reviewed. The user will advance their knowledge of family editing to include 3D families, nesting families together, creating and applying parameters to control their family and the use of formulas to test, validate and control a family. With this knowledge the user will be able to create most custom content they need for a project. Additional topics include massing and visualization for structural design.

### Learning Objectives:

- Become familiar with the different uses for massing in Revit
- Create standards and templates including title blocks
- Take a deep dive into the family editor, custom components and parametric constraints
- Learn visualization and rendering including material properties

### Courseware:

Ascent Official Courseware:  
Autodesk Revit BIM Management: Template and Family Creation

### Number of Days:

4 Half Day Sessions

### Continuing Education Hours:

16 hours

### Who Should Attend:

Current users of Revit Structure, who are comfortable with intermediate skills, should attend this class

### Prerequisites:

Revit Structure Fundamentals and Intermediate knowledge and project experience

### System and Software Requirements:

<http://www.asti.com/LiveLab-Learning-and-Training/LiveLab-System-Requirements>

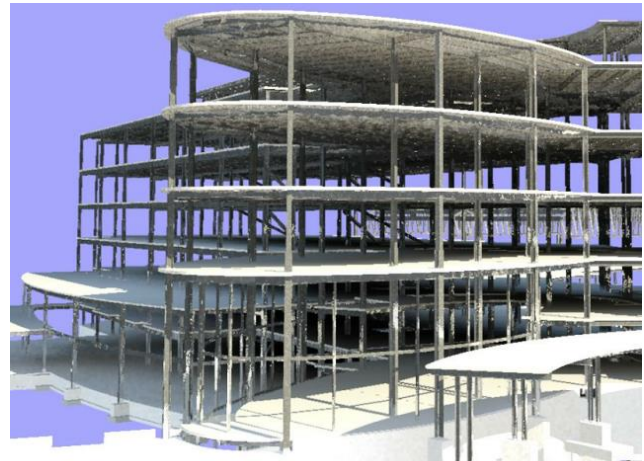
### FAQs and Cancellation Policy:

<http://www.asti.com/LiveLab-Learning-and-Training/LiveLab-FAQS>

## Class Outline and Topics:

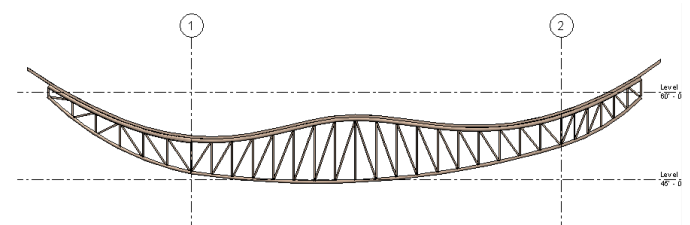
### Templates, Title Blocks and Standards

- Best Practice and Standards for Template Creation
- Creating Custom Title Blocks
- Schedules and Shared Parameters in Templates



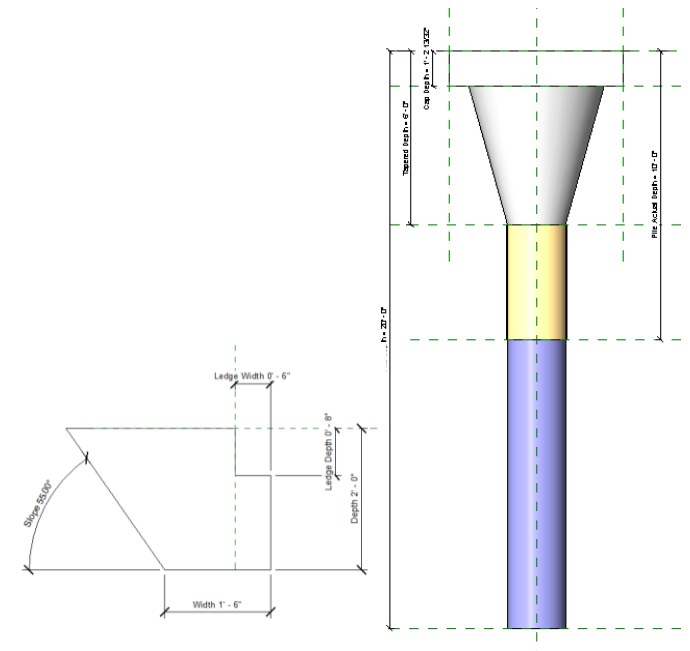
### Types of Families and Family Parameters

- Visibility Settings
- Formulas in Families
- Nesting in Families
- Family, Project & Shared Parameters
- Instance and Type Parameters
- Text, Integer, Number, Angle, Area, Length, Yes/No, Family Type
- Flexing Parameters



### System and Component Families

- Generic
- Host
- Hosted
- Un-Hosted
- In-Place Solid/Void/Mass
- Imported In-Place
- Profile
- Annotation
- Title Block
- 2D/3D Line Based





### Massing Studies

- Massing Concepts
- Placing Mass Elements
- Conceptual Mass Family Editor
- Creating Mass Forms (Solids / Voids)
- In-Place Mass Editing
- Model by face
- Analyzing Masses

### Visualization

- Perspective Views
- Walkthroughs: Creating and Editing

### Photorealistic Rendering

- Desktop vs. Cloud Rendering Concepts
- Materials
- Lighting

