

Autodesk Point Layout for Navisworks Manage

Brief Synopsis of Class Contents:

This class covers the basics of Autodesk Point Layout. Attendees will learn how to setup and use APL in conjunction with Navisworks Manage as it relates to creating control points, analyzing points for QAQC, or importing and exporting points for As-Builts.

Learning Objectives:

- Attendees will learn how to setup and use APL in conjunction with Navisworks Manage
- Understand the importance of starting with control points
- Create points based on selections
- Managing points based on field need
- Understand the workflow for importing/exporting points to/from the jobsite

Courseware:

Applied Software Training Material

Number of Days:

Two ½ day sessions

Continuing Education Hours:

7 hours

Who Should Attend:

All new users to Autodesk Point Layout
General Contractors, Subcontractors, Layout Teams

Prerequisites:

Basic Computer skills
Navisworks Manage Fundamentals helpful but not required

System and Software Requirements:

<http://www.asti.com/LiveLab-Learning-amp-Training/LiveLab-System-Requirements>

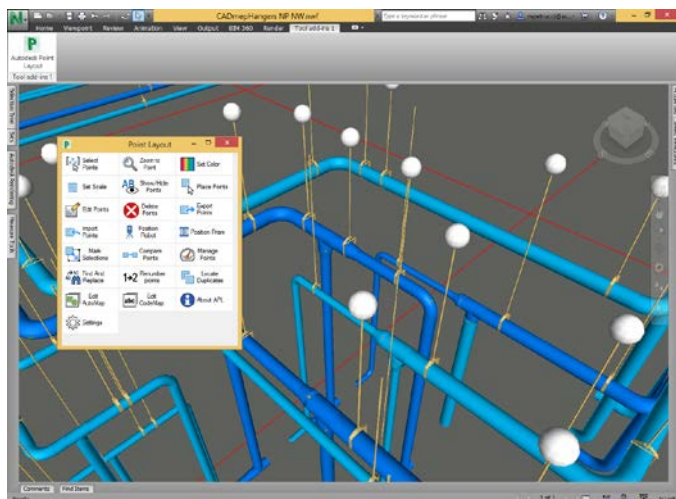
FAQs and Cancellation Policy:

<http://www.asti.com/LiveLab-Learning-amp-Training/LiveLab-FAQS>

Class Outline and Topics:

Introduction

- What is Autodesk Point Layout?
- Who uses Autodesk Point Layout?
- What are the benefits of APL?



Interface & Navigation

Best practices working with

- Workspaces
- Navisworks Options
- Opening, Appending & Merging Files
- File Types, Saving, Exporting and Publishing Projects
- Navigation Tools, Viewpoints, Object Properties
- Selection Tree and Selection Sets
- Object Selection, hiding and un-hiding
- Enable Sectioning (plane and section box)

Points

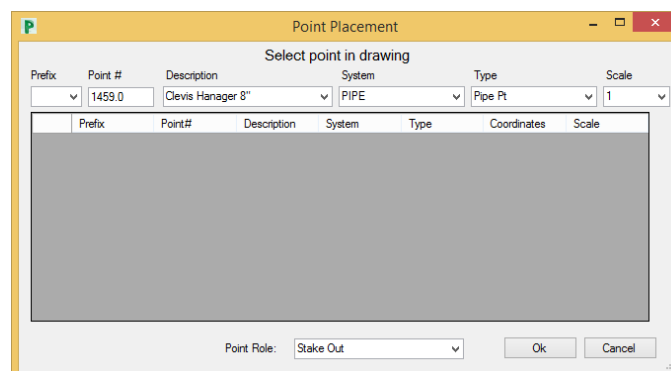
- Descriptions
- Systems
- Types
- Scale

Control Points

- Place on Columns
- Importing

Adding Points

- Place / Delete Points
- Mark Selections
- Edit Points
- Set Scale
- Set Color
- Show/Hide Points

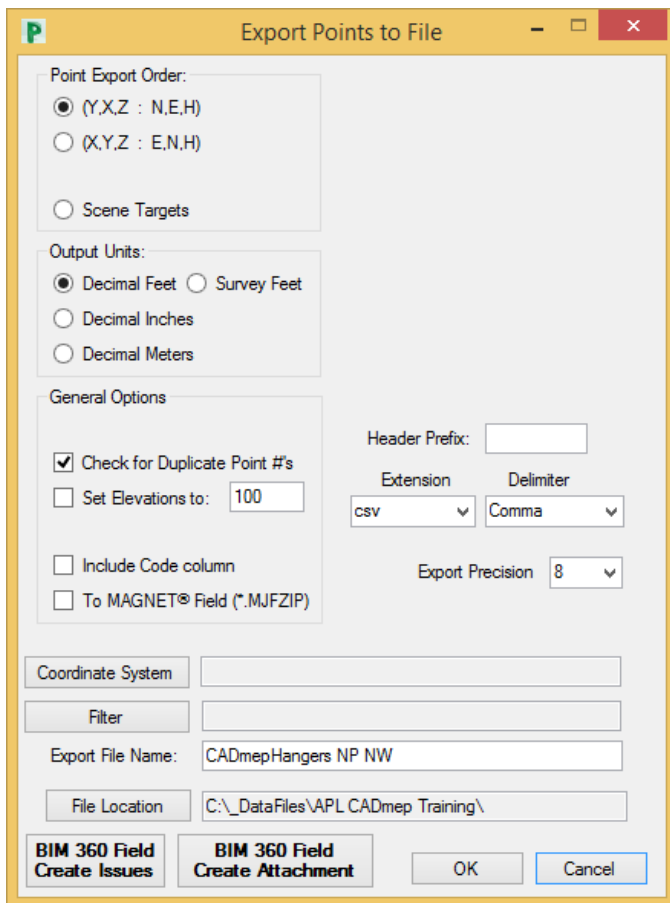


Browse

- Zoom to Points
- Duplicate Points

Import / Export / Compare

- Exporting Points to the field
- Point Export Order
- Output Units
- General Options
- Code Columns
- Coordinate System*
- Filters



Customize / Utilities

- Mange Points Dialog
- Renumber Points
- Tag Points
- Edit Code Maps
- Settings

