

Autodesk® Navisworks Manage™ - Fundamentals

Brief Synopsis of Class Contents:

The Navisworks online class covers the basic functions of Autodesk Navisworks. Students will be introduced to the concepts of Navisworks model exploration, 3D model navigation, clash detection, timeline simulation, and walkthroughs visualization.

Learning Objectives:

- Become familiar with the navigation functions of Navisworks
- Understand the relationship between the 3D authoring tool and Navisworks validation tools
- Learn how to setup views for camera Animation
- Compare Selection Sets versus Search Sets
- Build a comfort level using Clash Detection
- Understanding of the process for Timeline sequencing & Phasing

Courseware:

Ascent Official Training Courseware:
Autodesk Navisworks Essentials

Number of Days:

3 Half Day Sessions

Continuing Education Hours:

10.5 hours

Who Should Attend:

All new users of Navisworks

Prerequisites:

Basic Computer skills

System and Software Requirements:

<http://www.asti.com/LiveLab-Learning-amp-Training/LiveLab-System-Requirements>

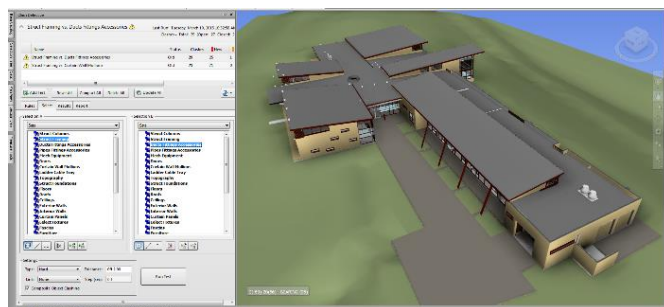
FAQs and Cancellation Policy:

<http://www.asti.com/LiveLab-Learning-amp-Training/LiveLab-FAQS>

Class Outline and Topics:

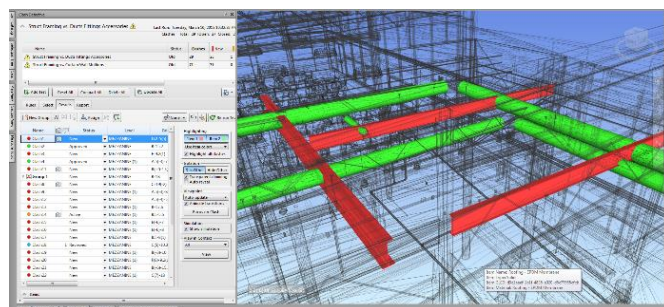
Introduction

- Overview
- Workspaces
- Navisworks Options
- Opening, Appending & Merging Files
- File Types, Saving, Exporting and Publishing Projects
- Navigation Tools, Viewpoints, Object Properties
- Selection Tree and Selection Sets
- Object Selection, hiding and un-hiding
- Enable Sectioning (plane and section box)
- Model Review: Measuring, Tagging, Comments and Redlining
- Exporting NWD files for archiving and Freedom Viewer



Animator


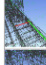
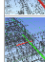

- Creating an Camera Animation
- Manipulating views, Animation Edit
- Exporting Animation videos



Clash Detection

- Creating Search Sets
- Clash Detection Setup
- Creating and Exporting Clash Tests
- Setting Rules, Selecting Search Sets, Setting Tolerances
- Running Tests & Analyzing Clash Results
- Exporting Clash Reports (HTML Tabular format)

Autodesk Navisworks® Clash Report

		Tolerance	Clashes	New Active	Reviewed	Approved	Resolved	Type	Status					
Struct Framing vs. Ducts Fittings Accessories		0.17%	32	26	1	2	2	1	Hard OK					
Image	Klash Name	Status	Distance	Grid Location	Date Found	Assigned To	Date Approved	Clash Point	Item 1 Element ID	Item 2 Element ID	Item 1 Name	Item 2 Name	Item Type	
	Clash1	New	-0.51	D-2-5 : MEZZANINE	2015/3/10 14:31:59			x: 73.86, y: 29.54, z: 111.00	Element ID: 252987	Metal - Steel - ASTM A992	Solid	Element ID: 842342	Round Duct	Solid
	Clash2	Approved	-0.51	H-15-2 : MEZZANINE	2015/3/10 14:32:59		2015/3/10 14:43:27	x:40.58, y: 39.28, z:110.71	Element ID: 572781	Metal - Steel - ASTM A992	Solid	Element ID: 921285	Round Duct	Solid
	Clash3	New	-0.48	F-8-2 : MEZZANINE	2015/3/10 14:32:59			x:-16.95, y: 87.21, z:100.81	Element ID: 268771	Metal - Steel - ASTM A992	Solid	Element ID: 911805	Round Duct	Solid
	Clash4	Approved	-0.44	A-5-7 : MEZZANINE	2015/3/10 14:32:59		2015/3/10 14:48:15	x:-10.92, y: 18.34, z:111.00	Element ID: 284025	Metal - Steel - ASTM A992	Solid	Element ID: 921809	Round Duct	Solid

Timeliner

- Opening and running a Timeline Simulation
- Creating Search Sets
- Establishing Tasks
- Assigning Tasks to model elements
- Linking Project Schedules
- Configuring Tasks Types
- Analyzing the Gantt View
- Timeliner Simulation Settings
- Exporting a Timeliner Animation

